



Fall 2004

Inside this issue:

Network Engineering Services, Inc. is "Doing Business As" Bolton, Perez & Associates	1
BPA providing CEI Services for NW 36th Street Reconstruction	1
NW 97th Avenue over SR 836 Construction Begins	1
Waterstone Way Bridge Complete	2
SR 112 Okeechobee Road Exit Ramp-Quality Control Engineers	2
BPA Hires Sean O'Keefe, P.E.	2
I-75/SR 826 Ramp A Complete	3
Bridge Painting & Structures Inspection for MDX	3
Ft. Lauderdale/Hollywood International Airport-South Terminal Exit Roadways	3
BPA's FDOT and Miami-Dade County Pre-Qualifications	4

Network Engineering Services, Inc. *Doing Business As*

Bolton, Perez & Associates:

2004 has brought many changes. We are now conducting business as Bolton, Perez & Associates (BPA). We made this change as part of an on-going process that began with our office relocation and more importantly the transition of our corporate identity.

BPA providing CEI Services for \$37 Million Dollar Palmetto Expressway Reconstruction at NW 36th Street

BPA is providing Construction Engineering and Inspection Services to FDOT District 6 for the reconstruction of the Palmetto Expressway at NW 36th Street. This project consists of widening approximately 1.75 miles of the Palmetto Expressway from 4 through lanes of traffic to 5 through lanes with an auxiliary lane in each direction. The greatest challenge for this project is to safely maintain 4 lanes of traffic in each direction used by an estimated 210,000 motorists each day. To accomplish this, the project requires 10 phases of traffic control.

The improvements consist of replacing 2 mainline bridges,



*Pile Driving Operations for Bridge Foundation
 Contractor: Astaldi Construction Corp.*

constructing 2 new ramp bridges, and widening 1 bridge on NW 36th Street. The profile of the Palmetto Expressway over NW 36th Street will be raised 9 feet to accommodate the new span length and increased clearance under the bridge. The project requires 10 temporary retaining walls for the profile change and 9 new retaining walls, 150 drainage structures will be installed, and 290,000 cubic yards of embankment.

The project started in January 2004 and will take 27 months to complete. The estimated construction cost is \$37 million.



Project Began - August 2004

Northwest 97th Avenue over SR 836 Project Begins

This new four-lane bridge will link NW 97th Avenue between 13th Street and Fontainebleau Boulevard by crossing over SR 836 and CSX Railroad. This \$15.8 million dollar project is one of Miami-Dade County's larger major traffic improvement projects.

This project, under construction by *The de Moya Group*, involves approximately one mile of roadway construction and the addition of a bridge approximately 1,168 ft long. The bridge is an ASSHTO Type VI beam bridge with a maximum span length of 144 ft. The project also includes retaining walls, signalization and lighting. Signalization is required at the intersections on both ends of the bridge. Detailed maintenance of traffic plans and coordination with CSX Railroad will be significant components of this project, which is expected to be complete in January 2006.



Waterstone Way Bridge Completed in Less Than 4 Months

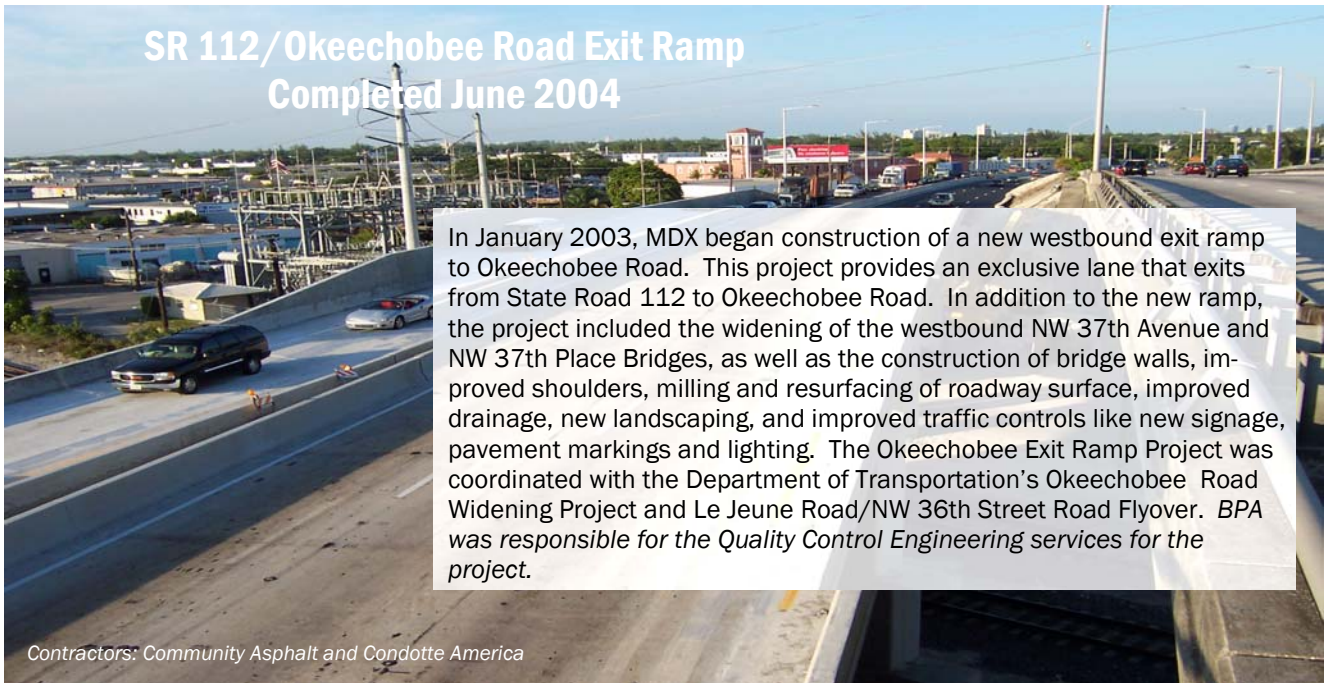


Reinforcing for Bridge Deck

Bolton, Perez & Associates was responsible for the design and construction inspection, including SFWMD right-of-way permitting for the new 90-foot, 3-span continuous concrete flat slab bridge structure over the C-103 Canal at Waterstone Way. The bridge is founded on 18-inch pile bents that support a continuous 18" reinforced concrete deck with span arrangements of 27-36-27 and carries two lanes of traffic. The bridge also supports the utility crossings and decorative roadway lighting. *Gimrock Construction completed this critical crossing in less than 4 months.*



Completed Project



SR 112/Okeechobee Road Exit Ramp Completed June 2004

In January 2003, MDX began construction of a new westbound exit ramp to Okeechobee Road. This project provides an exclusive lane that exits from State Road 112 to Okeechobee Road. In addition to the new ramp, the project included the widening of the westbound NW 37th Avenue and NW 37th Place Bridges, as well as the construction of bridge walls, improved shoulders, milling and resurfacing of roadway surface, improved drainage, new landscaping, and improved traffic controls like new signage, pavement markings and lighting. The Okeechobee Exit Ramp Project was coordinated with the Department of Transportation's Okeechobee Road Widening Project and Le Jeune Road/NW 36th Street Road Flyover. *BPA was responsible for the Quality Control Engineering services for the project.*

Contractors: Community Asphalt and Condotte America

Sean O'Keefe, P.E. hired to expand BPA's Highway, Civil and Transportation Division



Bolton, Perez & Associates is pleased to announce the appointment of Mr. Sean O'Keefe, P.E. as Director of Transportation Services.

Mr. O'Keefe's experience will supplement our Highway and Civil Group and expand our Transit Division.

With over twenty five years experience in project manage-

ment, planning, design and construction of large scale civil engineering projects, Mr. O'Keefe provides a special emphasis on transportation facilities, including rail, highways and bridge structures. This includes considerable experience in related infrastructure, drainage, sewer, lighting, signalization, utility relocations, site development, landscaping and survey.

Our diversity and experience continues to provide our clients with comprehensive, quality engineering services.



Palmetto Expressway/I-75 Interchange Ramp A Complete

BPA in association with Corven Engineering, Inc. was responsible for the *Fast-Tract* development of final contract documents for the Florida Department of Transportation's widening of this 3016' long concrete segmental box girder viaduct. The work consisted of adding 3'-8" to each side of the box girder concrete deck slab, adding bottom longitudinal post-tensioning in 9 spans, and re-striping the bridge for two lanes of traffic. The plans were completed in three months and bid results were within 1% of the engineer's estimate.



*Work Progress Photo
Contractor: Astaldi Construction Corp.*



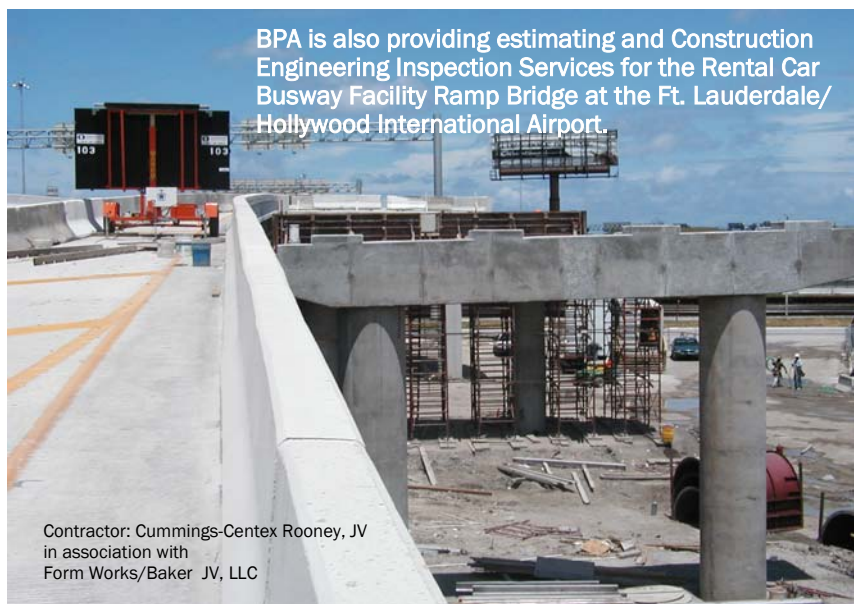
BPA Provides Steel Bridge Painting Plans and Technical Specifications for MDX

BPA was responsible for developing complete Bridge Painting construction documents for five MDX Expressway bridges. BPA provided bridge coatings assessment reports on 8 bridges for MDX. This project included hands-on inspection of each of the bridge structures, the development of bridge painting technical specifications and plans. In addition, BPA developed contract documents for cleaning and coating all bridges on the five MDX Expressway facilities.

Fort Lauderdale/Hollywood International Airport South Terminal Exit Roadways

Jake Perez, PE serves as Project Manager and Senior Bridge Engineer responsible for the development of the alternatives report and design-built criteria package for the new South Terminal Exit Roadways. The structures include the Consolidated Rental Car Facility exit ramp structure connecting into the upper exit roadways and the access ramp structure from Perimeter Road.

The immediate work includes development of several alternative designs, cost estimates, and alternative evaluations for selection of the preferred solution. Once selected, the design-build criteria package will be developed for the preferred alternative.



BPA is also providing estimating and Construction Engineering Inspection Services for the Rental Car Busway Facility Ramp Bridge at the Ft. Lauderdale/Hollywood International Airport.

Contractor: Cummings-Centex Rooney, JV
in association with
Form Works/Baker JV, LLC

BOLTON•PEREZ
& Associates



Consulting Engineers

7205 Corporate Center Drive
Suite 201
Miami, Florida 33126

T: 305-392-3190
F: 305-392-3090

Email: info@bpamiami.com

We're on the Web!
www.bpamiami.com

BPA is a CBE/DBE firm with the following Florida Department of Transportation and Miami-Dade County Qualifications:

FDOT Qualifications

Group 3 Highway Design — Roadway

- 3.1 Minor Highway Design
- 3.2 Major Highway Design
- 3.3 Controlled Access Highway Design

Group 4 Highway Design — Bridges

- 4.1 Minor Bridge Design

Group 5 Bridge Inspection

- 5.1 Conventional Bridge Inspection
- 5.3 Complex Bridge Inspection
- 5.4 Bridge Load Rating

Group 7 Traffic Operations Design

- 7.1 Signing, Pavement Marking and Channelization
- 7.3 Signalization

Group 10 Construction Engineering Inspection

- 10.1 Roadway Construction Engineering Inspection
- 10.2 Major Bridge Construction Engineering Inspection
- 10.3 Construction Materials Inspection

Miami-Dade County Qualifications:

- 2.02 Mass Transit Feasibility & Technical Studies
- 3.01 Site Development and Parking Lot Design
- 3.02 Highway Design
- 3.03 Bridge Design
- 3.09 Signing, Pavement Marketing, and Channelization
- 3.11 Signalization
- 4.01 Aviation Systems-Engineering Design
- 6.01 W & S Systems-Water Dist & Sanitary Sewage Collection
- 6.02 W & S System-Major Water & Sewer Pumping Facilities
- 11.0 General Structural Engineering
- 16.0 General Civil Engineering
- 17.0 Engineering Construction Management